

EXTERIOR SYSTEMS

GORDON
INCORPORATED



FORT LAUDERDALE INTERNATIONAL AIRPORT,
TERMINAL 1
Fort Lauderdale, FL
Featuring: Soffit-Sheild™ Exterior Soffit System



UNIVERSITY OF TEXAS TENNIS CENTER
Austin, TX
Featuring: Marquis™ Soffit System

EXTERIOR SYSTEMS

Gordon Exterior Specialties sets the standard for performance-driven, metal products that are attractive, environmentally friendly, and economical.

Gordon provides fully integrated and engineered systems to meet your design criteria. With Gordon, you are assured of perfect fit and finish with consistent color matching of all components.

DESIGN APPLICATIONS

- Soffits
- Column Covers
- Wall Panel Systems
- Fascia Systems
- Rain Screens
- Spandrel Panels
- Light Shelves
- Perforated Panels
- Acoustical Treatments
- Porte Cocheres
- Canopies
- Sunscreens
- ALPRO® Corrugated Systems
- MILLENNIUM® Systems
- Screen Walls
- Soffit Vents
- Louvers
- Exterior Accents
- Plaster Trims
- Extruded Aluminum
- Suspension
- Signage
- Sun Shades
- Trellis



INTERCONTINENTAL HOTEL
Atlanta, GA
Featuring: Custom Canopy
Soffit & Fascia System



CISCA Construction Excellence
Award Winner

L'AUBERGE CASINO & HOTEL
Baton Rouge, LA
Featuring: GreenWood™ Corrugated
Panel and Metal Soffit Systems

PRE-CONSTRUCTION / DESIGN ASSIST SERVICES

Gordon's pre-construction and design assist services help to achieve design objectives without budget compromise. Gordon provides:

- Review of the architect's conceptual design
- Clash detection using 3-D models with drawing review between all participating trades or manufacturers
- Selection of appropriate product(s) to ensure a complete system
- Provide custom product design and finish selection as necessary
- Specification writing assistance
- Design load and wind load requirements and recommended proper suspension and the product necessary to meet specific requirements
- Drawings showing conceptual design details through construction document details
- Budget quotations
- Design for feasibility and fabrication capability
- Engineering calculations and applicable PE stamp for the project location
- Recommend value engineered options
- Project kick-off and coordination meetings available at the manufacturing facility
- Samples and mockups throughout the design process as necessary
- Installation instructions and guidelines for the contractor
- Bill of material reconciliation with the contractor
- LEED¹ documentation



EXTERIOR SYSTEMS

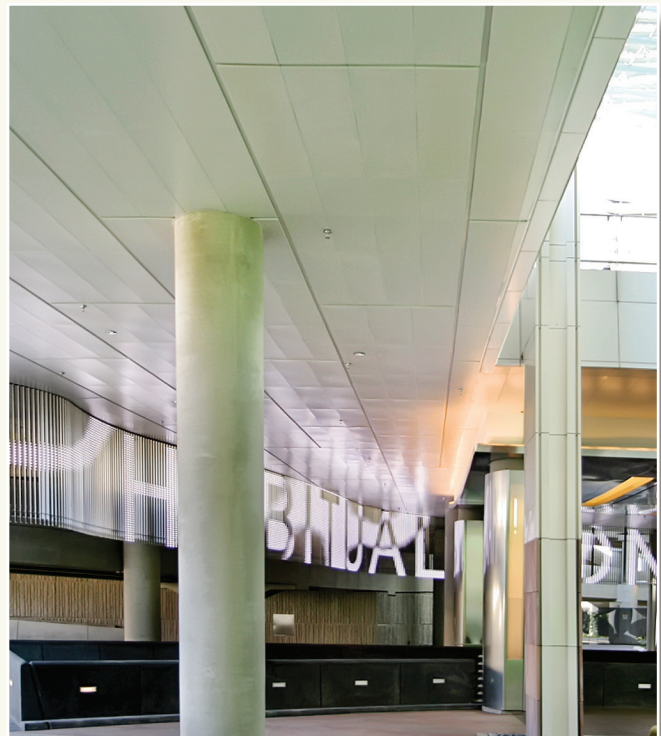
CANOPY SOFFITS



HYLTON PERFORMING ARTS CENTER, GMU
Manassas, VA
Featuring: ALPRO® Corrugated Soffit Systems



LINCOLN SQUARE
Seattle, WA
Featuring: ALPRO® Corrugated
Canopy Soffit Systems

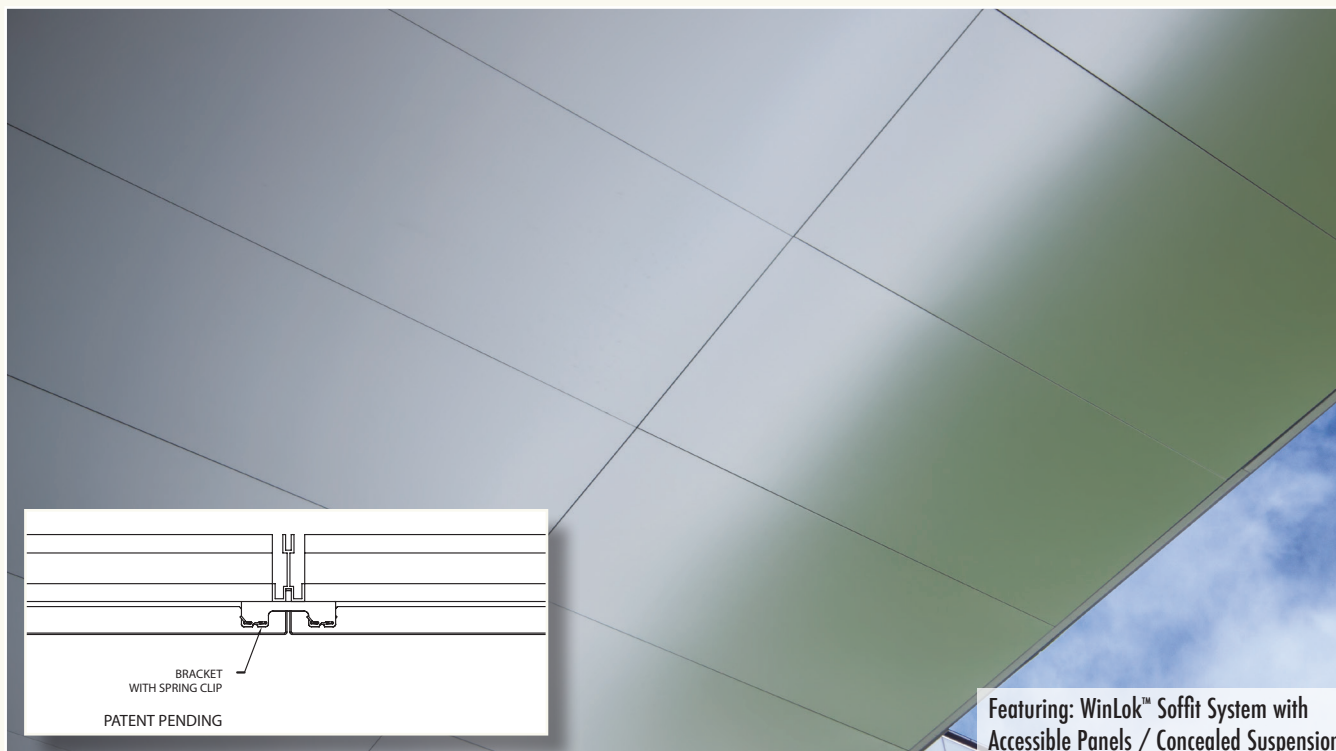


EXTERIOR SYSTEMS

SOFFITS



DALLAS MARKET CENTER
Dallas, TX
Featuring: WinLok™ Soffit System with
Accessible Panels / Concealed Suspension



Featuring: WinLok™ Soffit System with
Accessible Panels / Concealed Suspension



EXTERIOR SYSTEMS

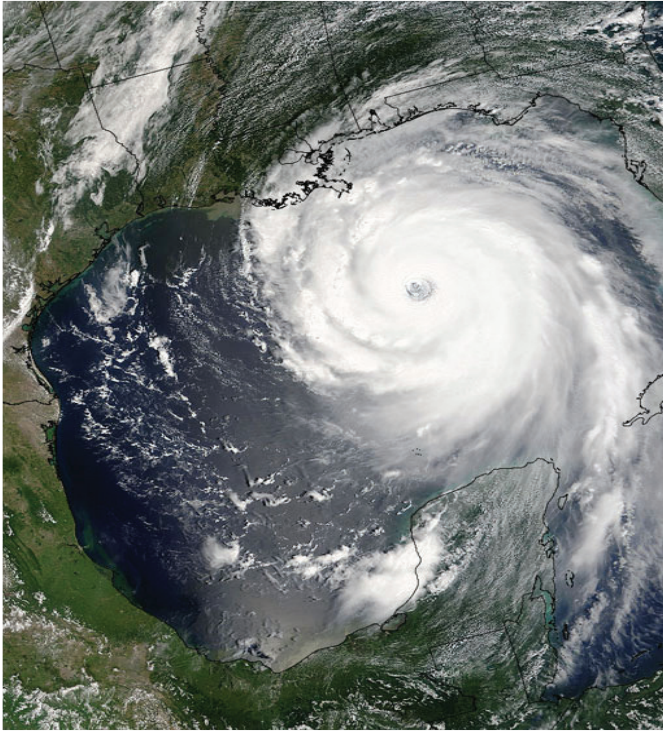
SOFFIT-SHIELD™



FORT LAUDERDALE INTERNATIONAL AIRPORT,
TERMINAL 1
Fort Lauderdale, FL
Featuring: Soffit-Shield™ Exterior Soffit System



WILLIS KNIGHTON SOUTH EMERGENCY ENTRANCE
Shreveport, LA
Featuring: Soffit & Fascia Cladding,
Column Covers, & Soffit Vents



Gordon SOFFIT-SHIELD™ is the fascia and soffit solution to protect vertical and horizontal exterior building surfaces at times of devastating environmental events.

- Design Load Performance
- Meets the applicable requirements of Florida Building Code Test Protocols of design loads of +/- 125 psf
 - Large and Small Missile Impact Resistant
 - Hurricane Resistant up to Category 5
 - Tornado Resistant up to F4 (<222 MPH)
- Designed to maintain building integrity
- Sleek and Stable

Miami-Dade County, Florida Approved

Notice of Acceptance

N.O.A. No. 18-0604.05

Expiration Date: August 14, 2023

Patent No.: US 8,166,728 B1

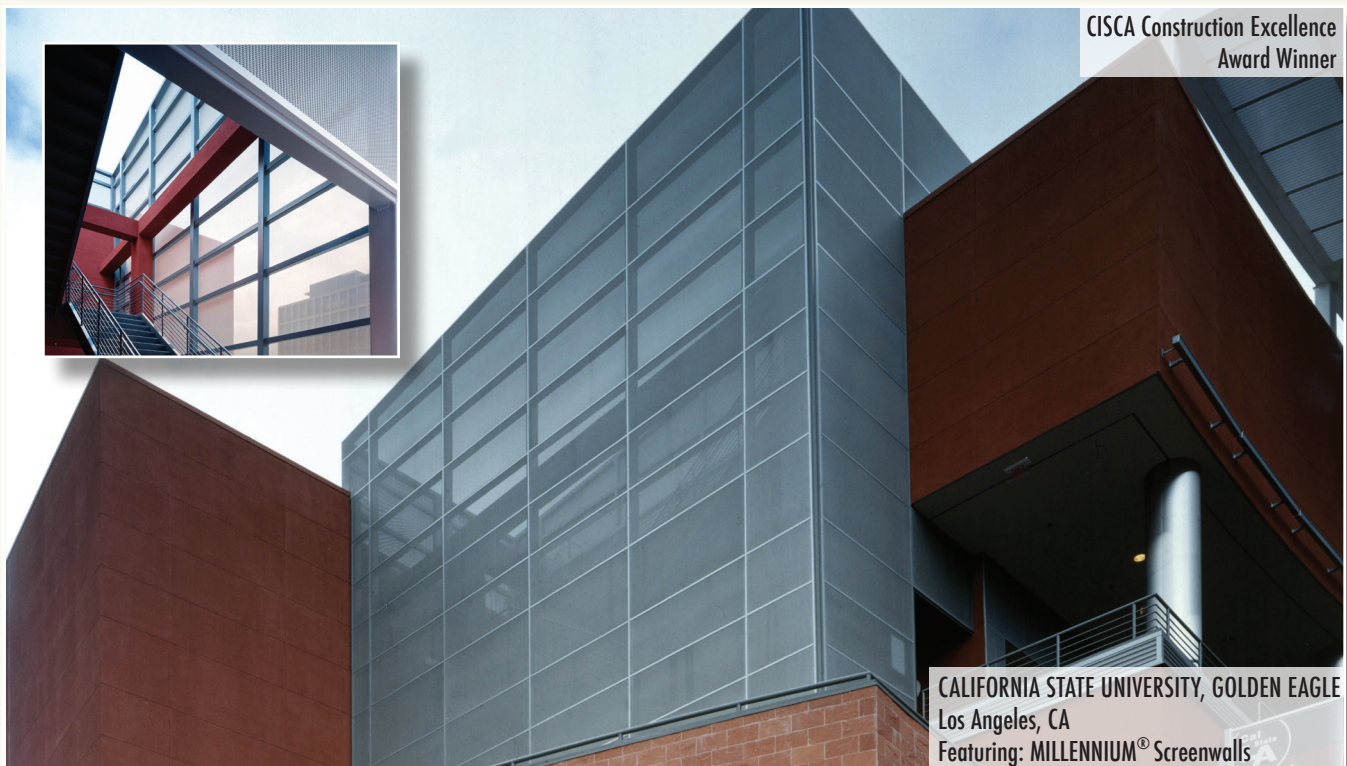


1000 CONNECTICUT AVE.
Washington, D.C.
Featuring: Soffit Cladding

EXTERIOR SYSTEMS

SCREENWALLS





EXTERIOR SYSTEMS

COLUMN COVERS





EXTERIOR SYSTEMS

MISCELLANEOUS



PERFORATED SOFFITS



SOFFIT VENTS



PERFORATED SCREENWALLS

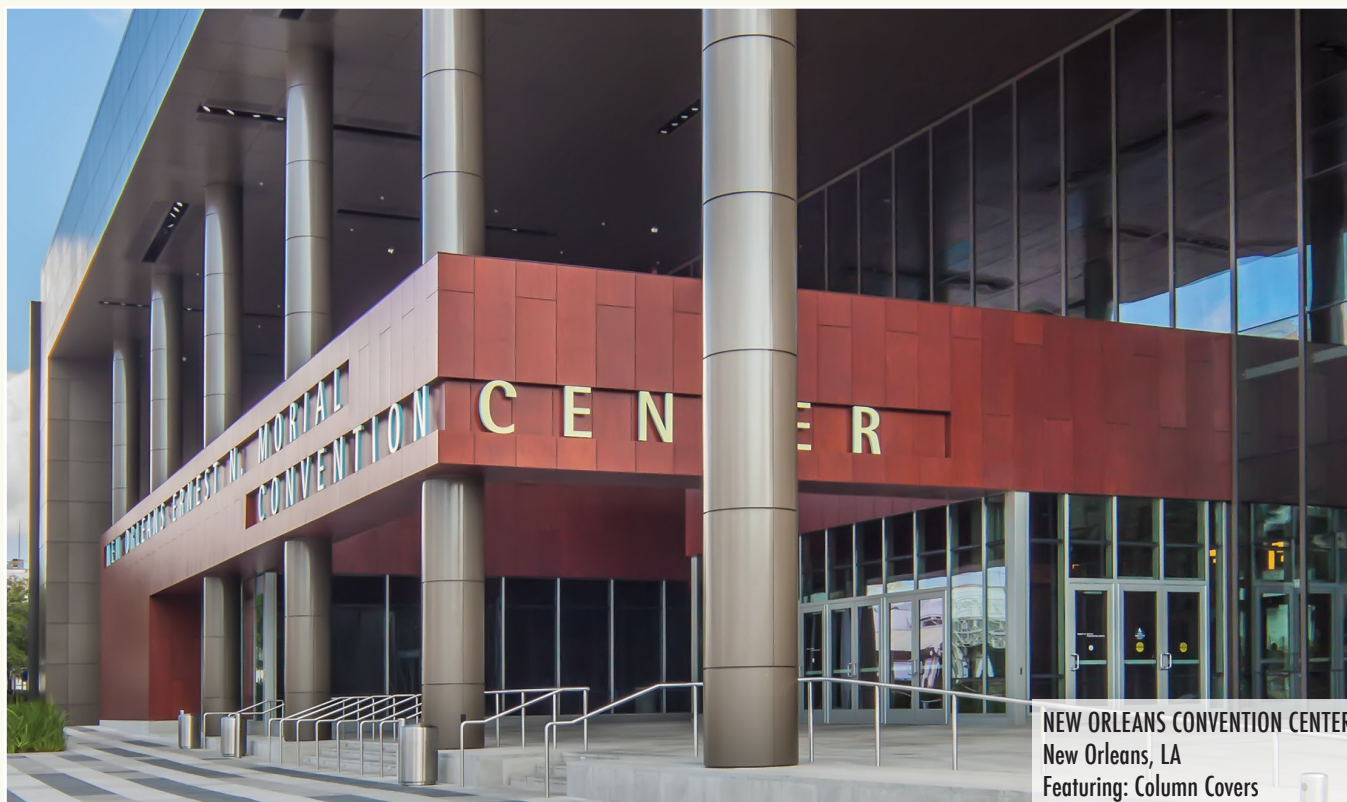


PERFORATED SIGNAGE



MILLENNIUM® SCREEN STAIRWELL





NEW ORLEANS CONVENTION CENTER
New Orleans, LA
Featuring: Column Covers

FINISHES

- Powder Coats
 - Standard
 - ACROGUARD® Enhanced Durability
 - ACROGUARD® Patina
 - ACROGUARD® Textured
 - ACROGUARD®-UVX Durable Exterior
 - ACROSTAT™ Antimicrobial
- Pre-Coated Paints
 - PVDF Organic Coatings
 - 50% Resin-based
 - 70% High Performance Resin-based
- Weathered Look Metal Finishes
 - Powder Coat
 - ACROGUARD®-UVX Durable Exterior
 - PVDF Organic Coatings
 - 70% High Performance Resin-based
- GreenWood™ - Wood Grain Films and Paints
 - Exterior
- GreenWood™ - Paints
 - PVDF Organic Coatings
- Mechanical & Enhanced Finishes
 - Directional
 - #3 Directional Brushed Finish
 - #4 Directional Brushed Finish
 - #6 Directional Brushed Finish
 - Non-directional
 - #8 Mirror Finish
 - Random Orbital Finish
 - Random Anti-Graffiti Finish
 - Patterned
 - Textured
 - Embossed
 - Anodized and other Color Enhancements
- Ceramatech™ Durable Porcelain

GORDON[®]
INCORPORATED

5023 HAZEL JONES ROAD, BOSSIER CITY, LA 71111
800.747.8954
800.877.8746 FAX
SALES@GORDON-INC.COM
GORDON-INC.COM
AN EMPLOYEE OWNED COMPANY

¹ LEED is a registered trademark of the U.S. Green Building Council.

